

COA25-05 **210 W Main St**, Bradley United Methodist Church is proposing to install exterior landscaping, parking, and aesthetic building lighting.

Exhibits:

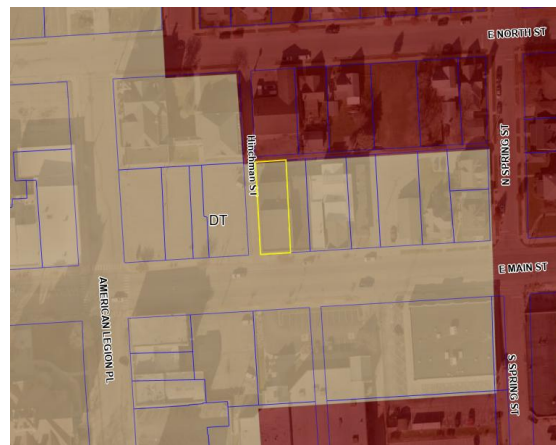
1. Vendor Proposal
2. Current Conditions Picture

Location and Surrounding Uses:

North TN Traditional Neighborhood & Historic District – Residential
 South DT Downtown & Historic District – Parking Lot, Commercial, & Residential lots
 East DT Downtown & Historic District – Commercial
 West DT Downtown & Historic District – Parking Lot & Commercial



Aerial Site Location



Zoning Site Location

CURRENT CONDITIONS

The primary building for this site is a historically iconic stone church with extensive architectural detailing and stained-glass windows. The western portion of the site is a modern addition to the building which, though using similar stone and arched windows, does not exhibit the architectural styling or historic qualities of the primary portion of the building. The site itself is an iconic feature of the Greenfield's historic downtown, and one of the most visible structures along the highly traveled US 40 (Main St).

Current Proposal

The Petitioner proposes to have down-lights installed the west façade wall for the purposes of lighting the parking lot. Landscaping and paths throughout the site will have ground-level lighting for aesthetic and path-lighting purposes. The public-facing façades of the historic portion of the building will have up-lighting installed to highlight and call attention to the building's aesthetic, historic, and iconic features.

Historic Board – COA

Per the Historic Preservation Code 155.10.F, "Certificates of appropriateness shall be granted if the Historic Board determines that the proposed action is not obviously incongruous with the historic district and shall not be granted if the proposed action is obviously incongruous with the historic district. In determining whether a particular proposal is obviously incongruous with the historic district, the Historic Board shall take

into account the purposes of this chapter, the visual compatibility standards contained in this chapter, the historic and architectural significance of the structure and the effect of the proposed change in diminishing or enhancing the significance, the effect of the proposed change on the streetscape, the effect of the proposed change on surrounding structures, and the effect of the proposed change on the district as a whole. The Historic Board shall act in a manner which preserves the visual aspects of the architectural and historic character of the district by assuring that obviously incongruous changes are not allowed."

This location is a highly visible location along the heavily traveled and famous US 40 (Main St). The building itself is one of the most historic and iconic stone structures within the city of Greenfield. Proper use of up-lighting to call attention to this structure during dark hours only serves to enhance the historic and attractive qualities of Greenfield's Downtown Historic District. The path-lighting as proposed will serve as mild accessory to this up-lighting, and function as a safety feature for those walking the paths and sidewalks surrounding the building. The parking lot lighting on the west will need to be installed in such a way to ensure it is minimally impactful to surrounding properties via glare or similar nuisances.

Staff is supportive of this proposal generally, but suggests the inclusion of a condition regarding the potential for glare and other negative impacts from the newly installed lighting. Shielding, dimmers, and similar features are commercially available for this purpose. Staff is willing to work with the Petitioner to ensure proper use of such features prevent negative impacts on neighboring properties.

Staff Recommendation: Approve the COA request based on the submitted Vendor Proposal, subject to the findings in the staff report and the following conditions:

1. Petitioner will work with Staff to ensure reasonable commercially available methods are used to prevent excessive glare or nuisances from the newly installed lighting. This includes but is not limited to:
 - a. Positioning of any uplighting to ensure it terminates on the building and does not go above the roofline nor project onto adjacent properties.
 - b. All lights not used for uplighting will be downlit/cutoff fixtures to not project light upward.
 - c. Lighting will be warm in nature and not harsh white or blue LED shades.
 - d. Wall-pack lights shall be cut off and directed downward so as to prevent spill over onto, or the creation of excessive glare as viewed from, neighboring properties.

P R O P O S A L

Outdoor Lighting Perspectives of Indianapolis
8070 Castleton Road
Indianapolis, IN 46250
(317) 210-3300

<https://outdoorlights.com/indianapolis>

OUTDOORLIGHTING
P E R S P E C T I V E S ®

Billing/Service Address

Penny Smith
Bradley United Methodist
Church
210 W Main St
Greenfield, IN 46140
(317) 326-7110
wpsmith1943@gmail.com

Date	April 22, 2025
Total	\$10,029.80

U P D A T E D W I T H U P L I G H T I N G O N P R A Y E R G A R D E N S I D E

This proposal expires on 6/27/2025

Prepared by Mitch Sweeney (mitch.sweeney@outdoorlights.com)

N O T E S

Hi Penny,

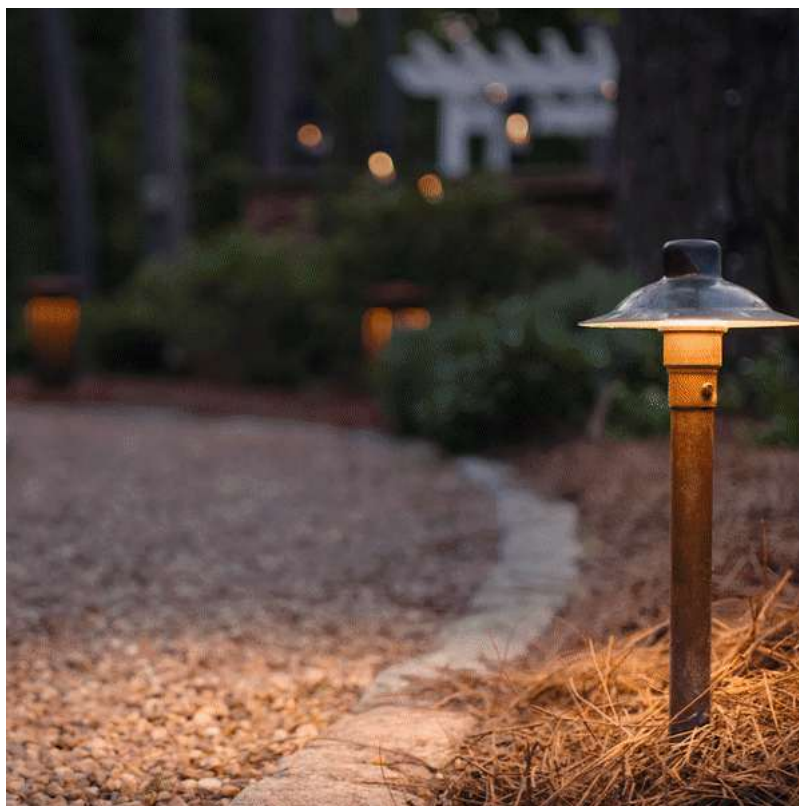
Wonderful meeting you and the team onsite. Bradley United Methodist Church is absolutely beautiful and full of character and history, and we would certainly love to be the company that brings it to life in the evenings:) Here are the details of the lighting design:

- Multiple power locations depending on which areas we are to proceed with at this time. All power locations will come with a timing controller to have the lighting on and off whenever you wish, without the need to adjust it throughout the year.
- The main design includes lighting for the front of the church from the far left side (front facing main entry side) all the way to where the wreath gets installed on the right side of the front area. The majority of these lights will be installed flush into the ground as to not create an

issue with fixtures sticking up oil the grass. This can become problematic as they tend to get hit when the grass is cut. We'll also add wash lighting to the front signage on both sides.

- Optional flood lighting mounted on the parking side for visibility to and from the parking lot. This part of the estimate may be adjusted depending on power on the roof, as I did not examine this area with our initial visit.
- Optional uplighting and low level lighting in the prayer garden, bringing (3) fixtures close to the ground and radiating light throughout the garden for an elegant look. The uplighting will have a total of (8) lights on this side with adjustable brightness.




You can scroll through the pictures in the picture section below for reference, and please reach out with any questions you may have. I wish you and the entire parish team a wonderful week, and I look forward to hearing your collective thoughts!



This proposal contains 2 options. Be sure to click the checkboxes below for the options you want to include.

Item	Description	Qty	Rate	Amount
------	-------------	-----	------	--------

Commercial Installation	LED lighting system installation. Includes professional customized lighting design, installation labor, fixtures, LED components, controller, professional grade transformer, all necessary wire, connection parts, and one year of our Shine365 program.	1		
600W Transformer High Tap 12-20v	Professional stainless steel transformer with high voltage tap runs for optimal output on longer runs/high wattage fixtures.	1	499.90	\$499.90
Astronomic Outdoor Timer	Astronomic Outdoor Timer	1	95.00	\$95.00
Redwood Well	<p>The Redwood Well recessed uplight features non-recycled brass & a high output light.</p> 	3	350.00	\$1,050.00
Redwood Infilight	Redwood LED integrated accent light	3	300.00	\$900.00
Ivy Well	<p>The Ivy Well recessed uplight features non-recycled brass and an MR-16 socket.</p> 	10	305.00	\$3,050.00
Azelea Wash Light	The Azalea wash light features a custom engineered driver and marine grade brass housing and is adjustable to from 230 to 1050 lumens.	2	285.00	\$570.00

				
PRAYER GARDEN SIDE				\$3,864.90
Pine Pathlight with Classic Wash Hat	LOW LEVEL LIGHTING AT THE GARDEN -- " Pine Pathlight with Classic Wash Hat " 	3	275.00	\$825.00
300W 11-15V Transformer	300W 11-15V Transformer	1	379.90	\$379.90
Astronomic Outdoor Timer	Astronomic Outdoor Timer	1	95.00	\$95.00
Azelea Wash Light	UPLIGHTING -- The Azalea wash light features a custom engineered driver and marine grade brass housing and is adjustable to from 230 to 1050 lumens. 	9	285.00	\$2,565.00
misc	Power location to be established on prayer garden side for centralized lighting. Depending on channels for wiring, additional cost might incur.	1		
Shine365	Limited Lifetime Warranty* Program. Pricing based on total fixture count and will be adjusted as fixtures increase/decrease.	18	15.00	\$270.00

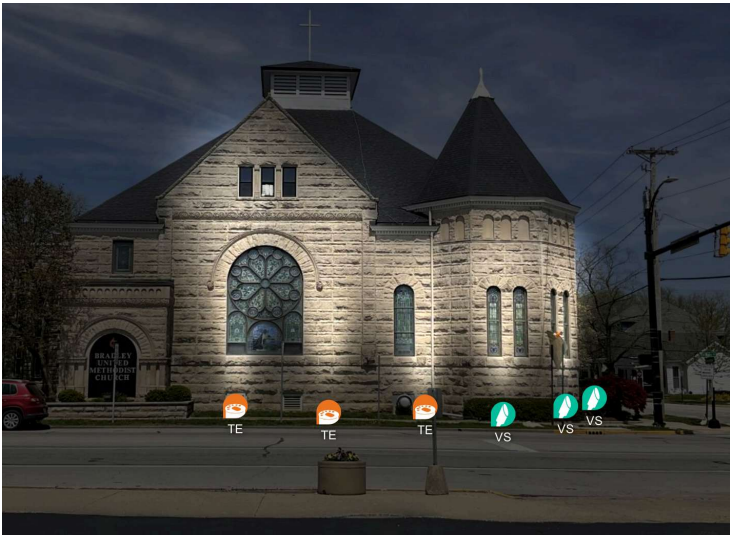
Shine365 Auto-Renew	Your system is covered for the first 12 months and we'll auto renew your warranty each year until you say otherwise. Review Agreement Terms Here: Automatic Recurring Billing Agreement	18	-15.00	(\$270.00)
misc	Tax Exempt - no tax charge applied.	1		
			Base	\$6,164.90
			PRAYER GARDEN SIDE	\$3,864.90
			Subtotal	\$10,029.80
			Tax	\$0.00
			Total	\$10,029.80

En Route Notifications Text message to (317) 326-7110

P I C T U R E S



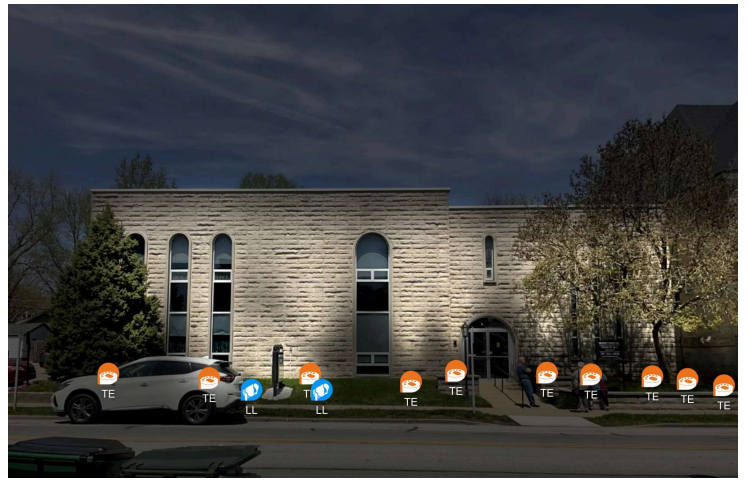
IMG_2760.jpeg



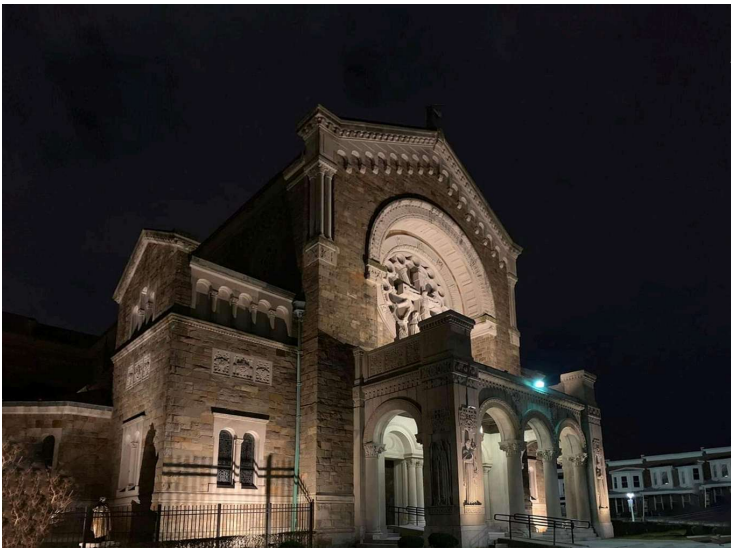
IMG_2761.jpeg



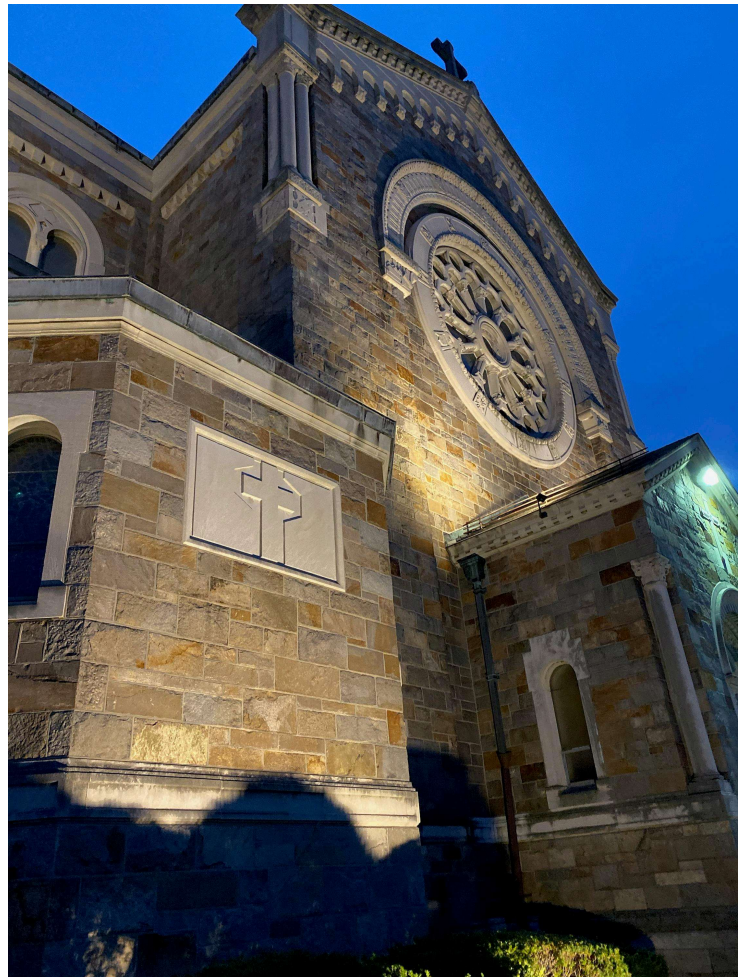
IMG_2765.jpeg



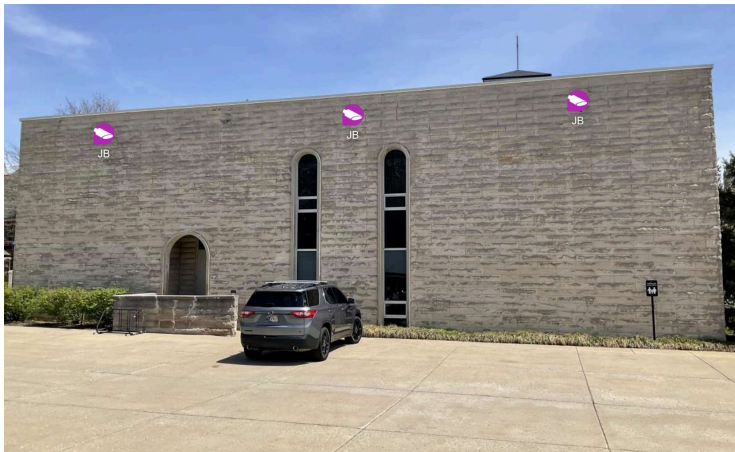
IMG_2766.jpeg



3-Baltimore-Parish-Front-After.jpg



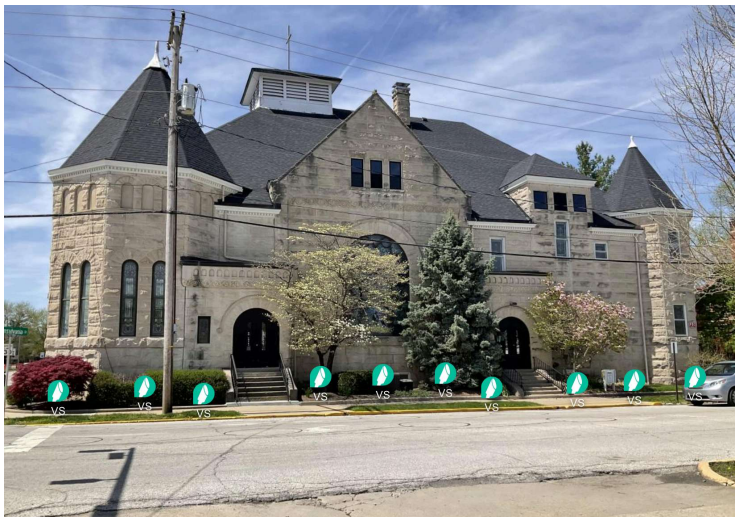
3-Baltimore-Parish-IMG_6331.jpg



IMG_2762.jpeg



IMG_2763.jpeg



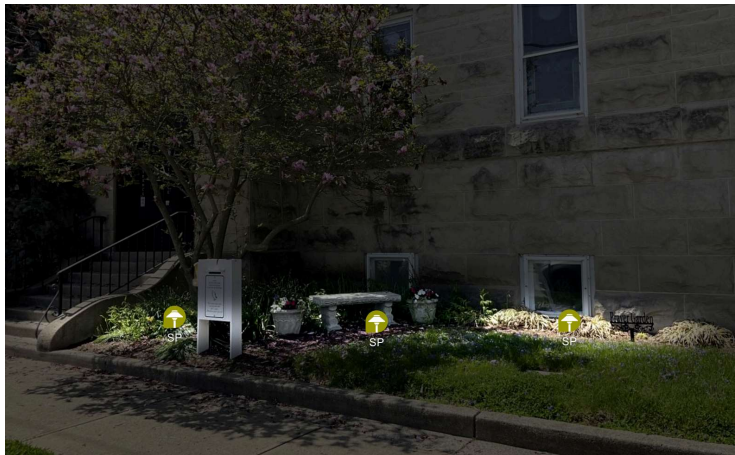
IMG_3234.jpeg



IMG_3233.jpeg



IMG_2767.jpeg



IMG_2768.jpeg



SHINE365

Keep your home shining bright with our Shine365 limited lifetime warranty*

*Limitations apply. Annual quality check required. For more details go to outdoorlights.com.



Outdoor Lighting Perspectives® is committed to our clients' satisfaction and providing the best warranties in the industry. When you join the Shine365 program, you receive a lifetime warranty* on your lighting system and priority service from our team.

As a part of the Shine365 limited lifetime warranty, our certified technicians will perform an annual quality check of your system to ensure it's working like the day it was installed.

HERE'S WHAT'S INCLUDED

In the event your system needs service, you are covered for these parts and labor under the Shine365 warranty:

- ☒ Transformer(s)
- ☒ Brass and/or copper fixtures
- ☒ Brass, heavy-duty glass covers
- ☒ Low-voltage wire
- ☒ LED bulbs

*Limitations apply. Annual quality check required. For more details go to outdoorlights.com.



Shine365 page 1.png



Our certified technicians will perform an annual quality check of your system when you join the Shine365 program. This ensures that your outdoor lighting system not only looks beautiful, but is functioning properly.

Our annual quality check includes the following services:

1. Perform visual inspection of fixture placement, system design, and recommend possible enhancements
2. Straighten and adjust fixtures to ensure design integrity
3. Remove mulch and debris that might be covering fixtures
4. Check for proper voltage delivery on each fixture
5. Clean lenses and fixtures to ensure longevity and correct light output
6. Check all connections
7. Tighten transformer terminal block connections
8. Conceal any exposed wire due to foot traffic or erosive conditions
9. Prune or trim landscaping near fixtures (with your guidance as needed)
10. Check automatic timing and operational control system



Joining the Shine365 limited lifetime warranty program gives you peace of mind that your outdoor lighting system is covered and continues working at its best.

To get started, contact your local Outdoor Lighting Perspectives office for details and pricing.



Shine365 page 2.png

TERMS AND CONDITIONS

Outdoor Lighting Perspectives Policies, Terms, Conditions and SHINE365 Limited Warranty Terms and Conditions: A deposit may be required at the time your order is placed. Balance is due upon completion. If full payment is not received within 10 days of completion of lighting installation, customer agrees to pay all reasonable attorney fees and court costs incurred by Outdoor Lighting Perspectives to secure the agreed upon fee for installation, materials, and/or services provided. Returned checks or chargebacks will result in a time- price differential (FINANCE CHARGE) of 18% (eighteen percent) per annum, but in no event in excess of the maximum amount allowed by law, shall be assessed and due on the unpaid balance from the due date until payment is received in full by the Outdoor Lighting Perspectives service provider. Payments received will be applied first to any outstanding FINANCE CHARGE and the remainder to the unpaid balance on the account.

Caution: A potential fire hazard exists if fixture and / or bulbs are covered with leaves, pine needles, mulch or other flammable material. Fixtures and / or bulbs covered by such materials will render all applicable warranties void, and may cause fixtures to fail. DAMAGE DUE TO ACCIDENT; MISUSE; ABUSE; THEFT; VANDALISM; RIOT; EXPLOSION; EARTHQUAKE; LIGHTNING; FIRE; WATER OR FLOOD DAMAGE; NEGLIGENCE, RECKLESS, KNOWING OR INTENTIONAL DAMAGE; OR ISSUES CAUSED BY HOME ELECTRICAL ISSUES; MAN-MADE DISASTERS, AND OTHER "ACTS OF GOD" are not covered by any warranty. It is the client's responsibility to ensure that 110-volt electric receptacles are available for system use, and are in good working order. Outdoor Lighting Perspectives disclaims all

responsibility for ensuring that utilized household circuits contain sufficient electrical load capacities. Outdoor Lighting Perspectives is not responsible for grass, shrubs, driveways, or other components of property that are affected by installation. Homeowner will be notified in advance of any necessary alterations to structures or landscape. One year guarantee on halogen bulbs is valid only if lights are operated under "normal use," deemed to be from sunset until 12:00am midnight. Lifetime fixture guarantee applies to all brass/and or copper fixtures and well light fixtures produced by Outdoor Living Brands Supply Corp. exclusively for Outdoor Lighting Perspectives (OLP). All non-OLP fixtures are covered by their respective manufacturer's warranties. Any tampering or attempts to fix any problems with, or alter any part of the lighting system, whether by the homeowner, associated vendors, or any other persons not employed by Outdoor Lighting Perspectives, will void all warranties. Outdoor Lighting Perspectives does not provide warranties on work performed on any lighting system not originally installed by Outdoor Lighting Perspectives. Clients are responsible to verify proposed design is entirely on their property. Outdoor Lighting Perspectives disclaims any and all liabilities for any repercussions due to equipment being installed on neighboring property. All Outdoor Lighting Perspectives franchise locations are independently owned and operated. Notice of Cancellation: You may cancel this contract, without penalty or obligation, at any time prior to midnight of the third business day after the date the contract is signed. If you cancel, any payment made by you under this contract will be returned within ten days following the receipt of your cancellation notice by the seller. Acceptance of this proposal indicates an agreed upon and binding contract between the parties listed as the billing/service address and Outdoor Lighting Perspectives.

SHINE365 LIMITED LIFETIME WARRANTY

LIMITED WARRANTY TERMS AND CONDITIONS

Subject to the terms and conditions described herein, Outdoor Lighting Perspectives of Indianapolis, ("Outdoor Lighting Perspectives"), warrants to the original end-user customer of the products specified below ("Products") that are installed by Outdoor Lighting Perspectives for the customer, that Outdoor Lighting Perspectives will repair or replace those Products that fail due to defects in material or workmanship. Repaired parts or replacement products will be provided by Outdoor Lighting Perspectives on an exchange basis and will be either new or refurbished to be functionally equivalent to new. This limited warranty covers only repair or replacement for defective Products installed by Outdoor Lighting Perspectives as provided above.

Outdoor Lighting Perspectives will not be liable for special, incidental, punitive or consequential damages, including, but not limited to, loss of enjoyment, business interruption, loss of profits, damage to or loss of other property or persons. Outdoor Lighting Perspectives' obligation to repair or replace any listed/covered Product, as may be required, is the sole and exclusive remedy available to you under this limited warranty. This limited warranty is in lieu of and supercedes all other warranties, express or implied. Some states may not allow the exclusion or limitation of incidental or consequential damages, so that exclusion may not apply to you. This limited warranty gives you certain legal rights. You may have other rights that vary from state to state. This limited warranty does not extend the manufacturer's warranty.

ELIGIBILITY FOR LIMITED WARRANTY

The only lighting systems eligible for this warranty are those systems originally installed by Outdoor Lighting Perspectives using Outdoor Lighting Perspectives branded products. In addition, the warranty only applies if the end-user customer enrolls in the annual maintenance plan, and only for so long as they are in good standing with and remains enrolled in the annual maintenance plan. The annual maintenance plan fee is based on the components of the lighting system installed.

A customer ceases to be in good standing under the annual quality check service if they do not timely make a payment due for that program. A customer whose annual quality check service lapses may re-enroll under the following conditions: 1) lighting system must be recertified, and 2) lighting system must be upgraded to current specifications. An inspection/recertification fee will apply, and standard labor and parts rates would apply for any required upgrades, all such costs being the responsibility of the customer. Once complete, the customer would be entered back into the Shine365 warranty program.

The end-user customer must retain proof of original ownership (original sales invoice). If the premises where the lighting system was installed is transferred, this Limited Warranty is also transferrable to the second owner as long as the new owner enrolls in the annual maintenance plan and for so long as the new owner is in good standing with and remains enrolled in the annual maintenance plan.

LIMITED WARRANTY EXCLUSIONS This limited warranty is subject to all of the following conditions and exclusions:

1. Outdoor Lighting Perspectives is not liable for, and does not cover under warranty, any costs associated with determining the source of the system problems. These costs shall be borne solely by the purchaser.
2. Outdoor Lighting Perspectives is not liable for and does not cover under warranty, any cost associated with installing, servicing, repairing and/or updating lighting system components that are not produced by Outdoor Living Brands Supply Corp. exclusively for the Outdoor Lighting Perspectives brand or were not originally installed by Outdoor Lighting Perspectives, or have been serviced by any other than a certified Outdoor Lighting Perspectives technician. These costs shall be borne solely by the purchaser.
3. In order to keep this limited warranty in effect, the product must have been handled and serviced only by a certified Outdoor Lighting Perspectives technician.
4. This limited warranty does not cover any damage due to: ACCIDENT; MISUSE; ABUSE; THEFT; VANDALISM; RIOT; EXPLOSION; EARTHQUAKE; LIGHTNING; FIRE; WATER OR FLOOD DAMAGE; NEGLIGENT, RECKLESS, KNOWING OR INTENTIONAL DAMAGE; OR ISSUES CAUSED BY HOME ELECTRICAL ISSUES. This limited warranty does not apply to any purchaser who bought the product from a reseller, distributor or non-authorized Outdoor Lighting Perspectives business, including but not limited to purchases from Internet auction sites. This limited warranty does not cover claims also covered by a manufacturer's warranty, any service contract, or claims covered by insurance (e.g., homeowner's insurance or general liability insurance).

5. This limited warranty is provided solely by Outdoor Lighting Perspectives (the independent franchisee identified above).
6. Powder coating and finishes are NOT covered by warranty. This applies to and may be covered by a MANUFACTURERS warranty but is not in any case extended by the SHINE 365 Limited Lifetime Warranty or any implied warranty through Outdoor Lighting Perspectives.

PRODUCTS COVERED

Subject to the limitations and exclusions noted above, the following Outdoor Lighting Perspectives Products produced by Outdoor Living Brands Supply Corp. exclusively for Outdoor Lighting Perspectives are covered by the Shine365 limited lifetime warranty from the date of original retail purchase when you opt-in to the annual quality check service:

- All transformers installed by Outdoor Lighting Perspectives.
- In addition to the limitations set forth above, the warranty does not cover service calls to reset circuit breakers or GFCI's. If anyone other than a qualified Outdoor Lighting Perspectives technician accesses the transformer for any reason other than timer adjustment, this warranty is void. Any additional fixtures that are added to the transformers that may cause the transformer to overload will void the warranty.*
- All brass and/or copper fixtures and well light fixtures installed by Outdoor Lighting Perspectives.
- Any fixtures damaged by homeowner or third-party will not be covered by warranty. *
- Brass, heavy-duty glass covers.
- The warranty does not cover lost or stolen lens covers or scratches. Glass and plastic lens covers that have been covered in mulch or other debris resulting in damage are not covered by this warranty.
- Low-voltage wire
- The warranty does not cover wire mistakenly cut by the property owner or other vendors or electrical shortage to the line as a result of anything being driven, stapled or manipulated into the wire lines.
- LED bulbs

*Note: All other transformers and fixtures including internal components installed by Outdoor Lighting Perspectives will be covered by the original manufacturer's warranty.

The following items are not covered under the Shine365 warranty include:

- All Lighting Control Automation controls, modules and astronomical timers.
- Halogen bulbs

- Any lens cover with a painted finish: The warranty does not cover lost or stolen lens covers or scratches.
- Commercial fixtures
- RGBW (Red, Green, Blue, White) or any color-changing fixtures
- Integrated non-field-serviceable fixtures
- Bistro/String lighting lamps or cord
- Wifi, Z-Wave, Bluetooth or radio controlled control systems
- Holiday lighting and festive products including but not limited to C9 bulbs and wire, wreaths, garland, string lighting, tree wraps, etc.
- Roofline Track Lighting

BASIC WARRANTY COVERAGE

For any customer that chooses not to be in the Shine365 limited lifetime warranty program or if your Shine365 warranty lapses, the following items are covered for two years from the date of installation:

- All transformers installed by Outdoor Lighting Perspectives. This limited warranty does not cover any damage due to: accident; misuse; abuse; theft; vandalism; riot; explosion; earthquake; lightning; fire; water or flood damage; negligent, reckless, knowing or intentional damage; issues caused by home electrical issues; or service calls to reset circuit breakers or GFCI's. If anyone other than a qualified Outdoor Lighting Perspectives personnel accesses the transformer for any reason other than timer adjustment, this warranty is void. Any additional fixtures that are added to the transformers that may cause the transformer to overload will void the warranty.
- All brass and/or copper fixtures and well light fixtures installed by Outdoor Lighting Perspectives. Any fixtures damaged by homeowner or a third-party will not be covered by warranty. This limited warranty does not cover any damage due to: accident; misuse; abuse; theft; vandalism; riot; explosion; earthquake; lightning; fire; water or flood damage; negligent, reckless, knowing or intentional damage; or issues caused by home electrical issues.
- LED bulbs except LightCraft Bistro Bulbs and Bistro String which are covered for a period of one year only.
- Low-voltage wire. The warranty does not cover wire mistakenly cut by the property owner or other vendors or electrical shortage to the line as a result of anything being driven, stapled or manipulated into the wire lines.
- RGBW (Red, Green, Blue, White) or any color-changing fixtures
- Brass, heavy-duty glass covers. The warranty does not cover lost or stolen lens covers or scratches. Glass and plastic lens covers that have been covered in mulch or other debris

resulting in damage are not covered by this warranty.

The following items are not covered under the basic warranty:

- All Lighting Control Automation controls, modules and astronomical timers.
- Halogen bulbs
- Any lens cover with a painted finish: The warranty does not cover lost or stolen lens covers or scratches.
- Commercial fixtures
- Integrated non-field-serviceable fixtures
- Holiday lighting and festive products including but not limited to C9 bulbs and wire, wreaths, garland, string lighting, tree wraps, etc.
- Bistro lighting bulbs and string
- Any damage due to: ACCIDENT; MISUSE; ABUSE; THEFT; VANDALISM; RIOT; EXPLOSION; EARTHQUAKE; LIGHTNING; FIRE; WATER OR FLOOD DAMAGE; NEGLIGENT, RECKLESS, KNOWING OR INTENTIONAL DAMAGE; OR ISSUES CAUSED BY HOME ELECTRICAL ISSUES. This limited warranty does not apply to any purchaser who bought the product from a reseller, distributor or non-authorized Outdoor Lighting Perspectives business, including but not limited to purchases from Internet auction sites. This limited warranty does not cover claims also covered by a manufacturer's warranty, any service contract, or claims covered by insurance (e.g., homeowner's insurance or general liability insurance).
- Roofline Track Lighting

ROOFLINE TRACK LIGHTING

- Outdoor Lighting Perspectives (OLP) warrants only to the original end user that the products and parts used to complete and contribute to a functioning lighting system including, but not limited to, lights, power kits, controllers, extensions, cables, connectors, and tracks will be free from defects in material and workmanship for 5 years.
- DISCLAIMER OF ALL OTHER WARRANTIES. NO OTHER WARRANTIES, EXPRESSED OR IMPLIED, ARE GIVEN, AND OLP EXPRESSLY DISCLAIMS ALL OTHER WARRANTIES, INCLUDING AND WITHOUT LIMITATION, THE IMPLIED WARRANTIES OF MERCHANTABILITY AND FITNESS FOR A PARTICULAR PURPOSE. Some jurisdictions do not allow limitations on how long an implied warranty lasts, so the above limitation may not apply to particular end users.
- Limitations. No salesperson, representative, or agent of OLP is authorized to make any guaranty, warranty, or representation that contradicts the terms contained in this Limited Warranty. Any waiver, alteration, addition, or modification to the warranties contained herein must be in writing and signed by authorized representatives of OLP to be valid, binding, and enforceable. OLP does not assume responsibility for any specific application to which any

products or parts are applied including, but not limited to, compatibility with other equipment. All statements, technical information, or recommendations relating to the products or parts are based upon tests believed to be reliable, but do not constitute a guaranty or warranty. OLP SHALL NOT UNDER ANY CIRCUMSTANCES WHATSOEVER BE LIABLE TO ANY PARTY FOR LOSS OF PROFITS, DIMINUTION OF GOOD WILL, OR ANY OTHER SPECIAL, CONSEQUENTIAL, OR INCIDENTAL DAMAGES WHATSOEVER WITH RESPECT TO ANY CLAIM IN CONNECTION WITH OLP PRODUCTS AND PARTS. Some jurisdictions do not allow the exclusion or limitation of incidental or consequential damages, so the above limitation or exclusion may not apply to particular end users.

- What May Void the Warranty. This Limited Warranty shall be null and void in the following circumstances.
 1. Accident, damage, abuse or misuse of products or parts.
 2. Installation, modification or repair of any product or part by the end user or any non-authorized OLP service provider; or
 3. Improper use or installation, or damage by accident or neglect, of any product or part by end user or any third party; or
 4. Abnormal operating conditions or applications, including but not limited to power surges, lightning, hurricanes, tornadoes, tsunamis and other weather related incidents or acts of God.
 5. Failure of the end user or any third party to exercise caution to protect any product or part or physical abuse.

Claims

When presenting a claim under this Limited Warranty, you must provide Outdoor Lighting Perspectives with the original sales invoice, which constitutes evidence of the original purchaser's date of purchase. You must provide Outdoor Lighting Perspectives with documentation of all services performed on the Products.

To submit a claim, you must contact Outdoor Lighting Perspectives at:

Outdoor Lighting Perspectives of Indianapolis

8070 Castleton Road

Indianapolis, IN 46250

(317) 210-3300

indianapolis@outdoorlights.com

Click [here](#) if you no longer wish to receive notifications or related information about this proposal.